

GENERAL DESCRIPTION / APPLICATIONS

Three way direct acting solenoid valve with spring return, redundant configuration circuit.

Suitable for gaseous media compatible with the (body/seals) material used, vacuum.

Not suitable for liquid media.

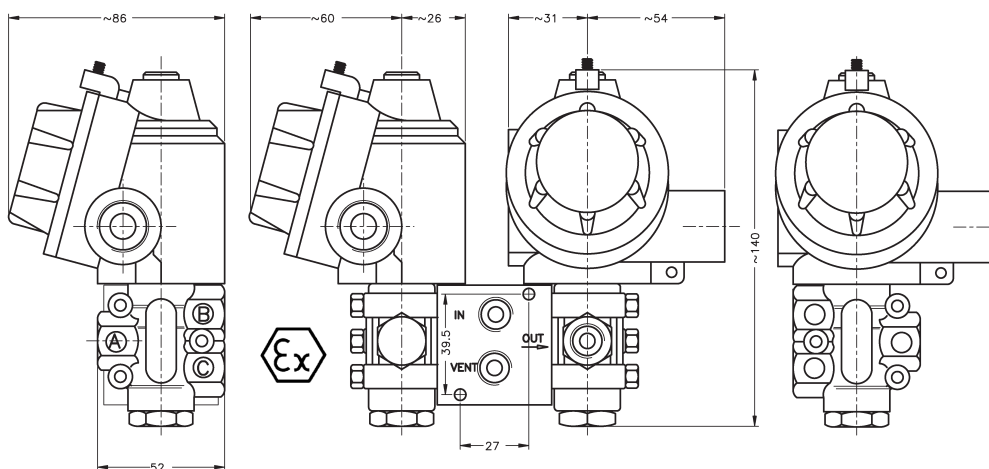
Forged brass, nickel-plated brass or stainless steel body.

Stainless steel internal parts.

Stainless steel springs.

360° degrees orientable solenoid.

Mountable in any position.



ELECTRICAL INFORMATION

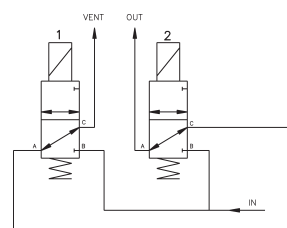
Light alloy explosion-proof "Ex-d" (EN60079-1) solenoid housing. Electrical and mechanical parts certified according to 2014/34/UE ("ATEX") directive, suitable to control the flow of inert and/or flammable gases or liquids. Internal and external anti-twist ground connecting screws. Inside terminal board suitable for cable up to 2,5 mm².

cable entry threaded: 1/2" Gk UNI-6125 (standard)
1/2" NPT, ISO M20x1.5 (available upon request)
protection class: IP-67
Ex protection class: Ex-d II 1G/2GDc (IIB o IIC)
Temperature class: T6 or T5 (t.amb -20 ÷ +40 °C)
T5 or T4 (t.amb -20 ÷ +60 °C) upon request.
T5 or T4 (t.amb -60 ÷ +60 °C) upon request
F (155°C) - H (180°C) upon request.

Coil insulation class: H (180°C).
Winding wire class: Continuous (S.I.) 100% ED
Duty: Alternate current* 11W.
Power consumption₍₂₎: Direct current 11W.
Tolleranza tensione: ± 10% (standard) others available upon request
Voltage tolerance: ± 10%
Insulation: >1000 MOhm
Dielectrical Strength: >2000 V/1'
Standard voltages 12, 24, 48, 110, 115, 125, 220, 240 Volt
DC=₍₃₎ o AC~(50/60Hz): other voltages available upon request.

* Alternate current operation (Vac~) is performed using a direct current coil fitted with an internal rectifier (Nadi coil type B6/R).

OPERATION



C90 - Redundant configuration (Voting 1oo2)

In: N
Out: OUT
Vent: VENT

Coil de-energized: port IN closed.
port OUT and VENT open.
Coil energized: port VENT closed
port IN and OUT open.

SPECIFICATIONS AND DIMENSIONS

MODEL	ORIFICE DIAMETER	BODY RATING	PRESSURES IN BAR			Flow factor kv (liters/min.)	WEIGHT Kg.
			MIN./MAX. OPERATING	MIN. DIFFERENTIAL	MAX. PRESSURE		
C 9 0	6	10	0	10	10	9	3

suffix (options available upon request): ⁽¹⁾ "LT" (low t.amb. certificate), ⁽²⁾ "LC" (low consumption), ⁽³⁾ "V" spike suppressor.

a	Body material	b	Port size	c	Seals material	d	Protection class
T	Brass.	C	1/4" GAS	D	1/4" NPT	0	Buna N
I	Stainless steel.			1	FPM	B	Ex-d IIB
				7	HNBR	C	Ex-d IIC