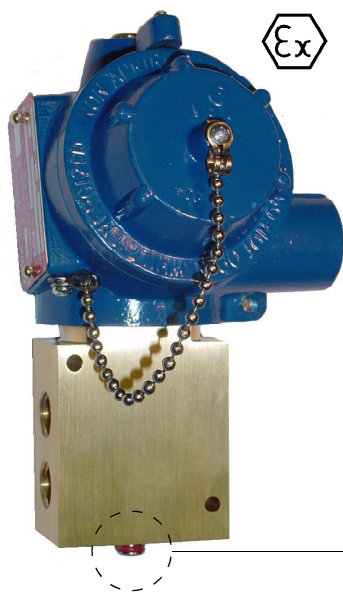


#### GENERAL DESCRIPTION / APPLICATIONS / DIMENSIONS



Three way manual-reset solenoid valve.

Suitable for gaseous media.

Model for liquid media available upon request.

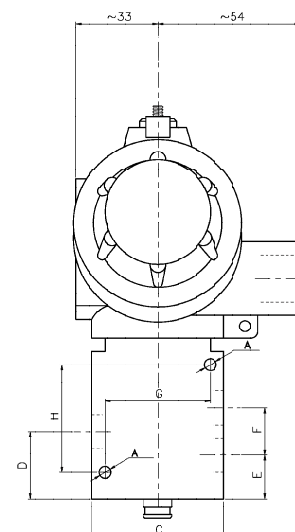
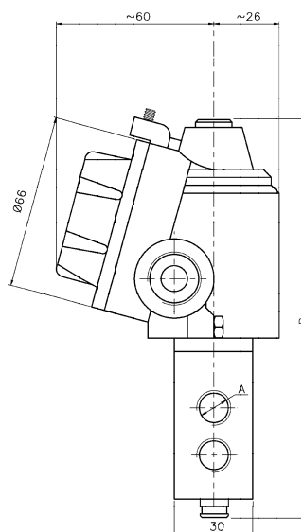
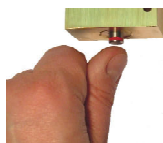
Stainless steel internal parts.  
Stainless steel spring.

Stainless steel internal parts.

Stainless steel springs.

360° degrees orientable solenoid.

Mountable in any position.



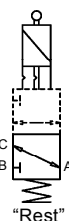
#### ELECTRICAL INFORMATION

Light alloy explosion-proof "Ex-d" (EN60079-1) solenoid housing. Electrical and mechanical parts certified according to 2014/34/UE ("ATEX") directive, suitable to control the flow of inert and/or flammable gases or liquids. Internal and external anti-twist ground connecting screws. Inside terminal board suitable for cable up to 2,5 mm<sup>2</sup>.

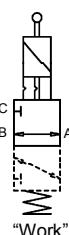
cable entry threaded:	1/2" Gk UNI-6125 (standard)
protection class:	1/2" NPT, ISO M20x1.5 (available upon request)
Ex protection class:	IP-67
Temperature class:	Ex-d II 1G/2GDc (IIB o IIC)
	T6 or T5 (t.amb -20 ÷ +40 °C)
	T5 or T4 (t.amb -20 ÷ +60 °C) upon request.
	T5 or T4 (t.amb -60 ÷ +60 °C) upon request <sup>(1)</sup>
	F (155°C) - H (180°C) upon request.
	H (180°C).
Coil insulation class:	Continuous (S.I.) 100% ED
Winding wire class:	Alternate current 11VA (inrush 28VA).
Duty:	Direct current 11W.
Power consumption <sup>(2)</sup> :	± 10% (standard) others available upon request
Tolleranza tensione:	± 10%
Voltage tolerance:	>1000 MOhm
Insulation:	>2000 V/1'
Dielectrical Strength:	12, 24, 48, 110, 115, 125, 220, 240 Volt
Standard voltages	other voltages available upon request.
DC <sup>(3)</sup> o AC~(50/60Hz):	

\* Alternate current operation (Vac~) is performed using a direct current coil fitted with an internal rectifier (Nadi coil type B6/R)

#### OPERATION



"Rest"



"Work"

Three way manual reset solenoid valves are normally used to realize safety pilot devices for single-acting actuators.

Manual reset solenoid valves can only change from "Reset" to "Work" condition operating the latching device manually.

##### "E" type operation

Spool of the valve is manually latched to the "Work" condition with the coil de-energized.  
Energizing the coil the spool will be unlatched and the valve will come back to the "Rest" position.

##### "D" type operation

Spool of the valve is manually latched to the "Work" condition with the coil energized.  
De-energizing the coil the spool will be unlatched and the valve will come back to the "Rest" position.

#### SPECIFICATIONS AND AVAILABLE OPTIONS

MODELLO					ORIFICE DIAMETER mm	PRESSURE IN BAR			OPER.	Flow factor kv (liters/ min.)	weight Kg.	DIMENSION (millimeters)							
						NOMINAL MAX.	DIFFERENTIAL					A	B	C	D	E	F	G	H
MIN.	MAX.																		
F 0 1	a	7 0	C	b c d	7	16	0	14	D	12	1.2	4,5	178	50	25,5	15,5	20	40	41
F 0 1		7 0	D																
F 0 1		1 1	F		11	16	0	14	D	30	1.2	6,5	165	60	33,5	18,5	30	48	57
F 0 1		1 1	G																

suffix (options available upon request): <sup>(1)</sup> "LT" (low t.amb. certificate), <sup>(2)</sup> "LC" (low consumption), <sup>(3)</sup> "V" spike suppressor.

a Body material	b Port size	c Seals material	d Protection class	
T Brass. I Stainless steel.	C 1/4" GAS D 1/4" NPT	0 Buna N 1 FPM 7 HNBR	B Ex-d IIB C Ex-d IIC	