

GENERAL DESCRIPTION / APPLICATIONS / DIMENSIONS



Three way manual-reset solenoid valve.

Suitable for gaseous media.

Model for liquid media available upon request.

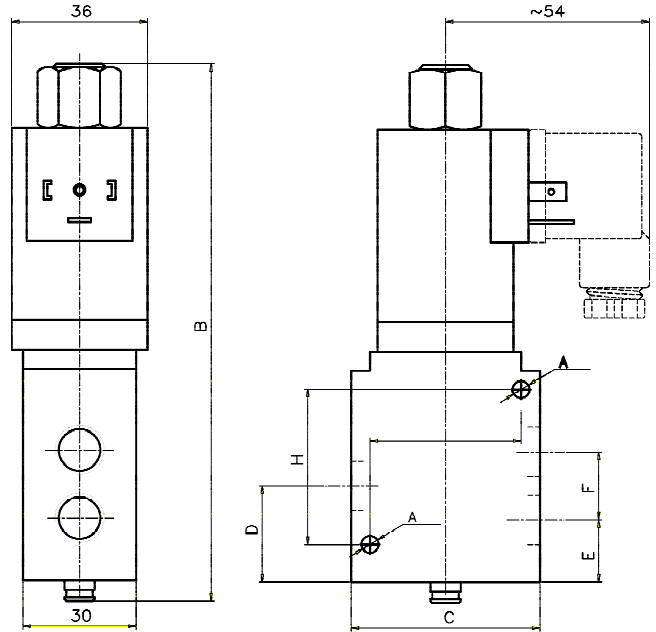
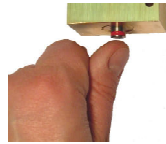
Stainless steel internal parts. Stainless steel spring.

Stainless steel internal parts.

Stainless steel springs.

360° degrees orientable solenoid.

Mountable in any position.



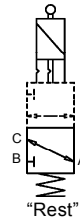
ELECTRICAL INFORMATION

Glass-reinforced nylon moulded coil with electrical connection suitable for DIN-43650A plug (2 poles+ground) or "faston" wire terminal.

- Coil type: B6
- Insulation class: F (155°C) - H (180°C) upon request.
- Winding wire class: H (180°C)
- Protection degree: IP-65 (EN60529 standards) when properly plug connected with DIN-43650A plug.
- Duty: Continuous - 100% ED
- Power consumption⁽¹⁾: 11W *
- Voltage tolerance: ± 10%
- Insulation: >1000 MOhm
- Dielectrical Strength: >2000 V/1'
- Standard voltages: 12, 24, 48, 110, 115, 125, 220, 240 Volt
- DC = o AC~(50/60Hz): other voltages available upon request.

* Alternate current operation (Vac~) is performed using a direct current coil and a DIN-43650A plug with internal rectifier (Nadi plug code: 398).

OPERATION

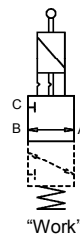


Three way manual reset solenoid valves are normally used to realize safety pilot devices for single-acting actuators.

Manual reset solenoid valves can only change from "Reset" to "Work" condition operating the latching device manually.

"E" type operation

Spool of the valve is manually latched to the "Work" condition with the coil de-energized. Energizing the coil the spool will be unlatched and the valve will come back to the "Rest" position.



"D" type operation

Spool of the valve is manually latched to the "Work" condition with the coil energized. De-energizing the coil the spool will be unlatched and the valve will come back to the "Rest" position.

MODELLO	ORIFIZIO DIAMETRO mm	PRESSIONE IN BAR			FUNZ.	COEFF. kv (l./min)	PESO Kg.	DIMENSIONI (millimetri)									
		NOMINALE MAX.	DIFFERENZIALE					A	B	C	D	E	F	G	H		
			MIN.	MAX.													
F 0 1	a 7 0	b c d	7	16	0	14	D	12	1.2	4,5	145	50	25,5	15,5	20	40	41
F 0 1	1 1	F	7	16	0	14	D	30	1.2	6,5	162	60	33,5	18,5	30	48	57

suffix (options available upon request): ⁽¹⁾ "LC" (low consumption)

a	b	c	d	
Body material	Port size	Seals material	Protection class	
T Brass. N Nickel-plated brass. I Stainless steel.	C 1/4" GAS D 1/4" NPT E 3/8" GAS T 3/8" NPT F 1/2" GAS G 1/2" NPT	0 Buna N 1 FPM 7 HNBR	P IP 65 When properly plug connected with DIN-43650A plug.	