

GENERAL DESCRIPTION / APPLICATIONS



Two way air-operated valve with spring return.

Suitable for gaseous and liquid media compatible with the (body/seals) material used, vacuum.

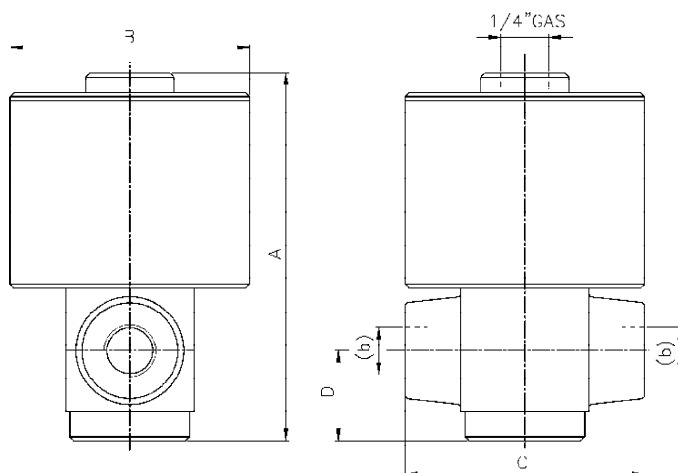
Forged brass, nickel-plated brass or stainless steel body.

Stainless steel internal parts.

Stainless steel springs.

Mountable in any position.

DIMENSIONS



PNEUMATIC ACTUATOR INFORMATION

Simple effect actuator with spring return.

Brass or nickel-plated brass cylinder.

Actuator piston material: NBR (Buna N).

Min. operating pressure: 1/10 of exercise pressure with a min. pressure of 1 bar.

Max. operating pressure: 10 bar max.

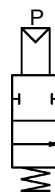
OPERATION



M22 - Normally closed.

N → OUT

At rest: IN and OUT closed
Air in P: from IN to OUT



M23 - Normally open

N → OUT

At rest: IN comunica con OUT
Air in P: from IN to OUT.

SPECIFICATIONS AND DIMENSIONS

MODEL						ORIFICE DIAMETER mm	PRESSURE IN BAR				Flow factor kv (liters/min.')	WEIGHT Kg.	DIMENSIONS (millimeters)			
							NOMINAL MAX.	DIFFERENTIAL					A	B	C	D
MIN.	MAX.	MAX. with PE seals														
M 2 2	a	5 0	C			5	80	0	30	80	6,5	1,2	92	60	60	23
M 2 2		5 0	D			5	80	0	30	80	6,5	1,2	92	60	60	23
M 2 2		7 0	E			7	80	0	30	80	12,5	1,6	92	60	70	23
M 2 2		7 0	T			7	80	0	30	80	12,5	1,6	92	60	70	23
M 2 2	T	1 3	F			13	80	0	30	80	40	2,2	119	75	90	38
M 2 2	T	1 3	G			13	80	0	30	80	40	2,2	119	75	90	38

a Body material	b Port size	c Seals material		
T Brass. N Nickel-plated brass. I Stainless steel only for 1/4" & 3/8" bodies.	C 1/4" GAS D 1/4" NPT E 3/8" GAS T 3/8" NPT F 1/2" GAS G 1/2" NPT	0 Buna N 1 FPM 6 EPDM 7 HNBR 8 PE		